



# Serving Families through the Community Schools Model

Dennis Duffy | School Improvement Program Manager

Jackie Blagsvedt | School Improvement Program Specialist

August 7, 2019



# Ten Minnesota Commitments to Equity

1. Prioritize equity.
2. Start from within.
3. Measure what matters.
4. Go local.
5. Follow the money.
6. Start early.
7. Monitor implementation of standards.
8. Value people.
9. Improve conditions for learning.
10. Give students options.

1. Provide an overview of the Full-Service Community Schools Model
2. Highlight examples of the model in Minnesota
3. Recommend resources for school leaders interested in implementing the model

- Introduce yourself to a neighbor
- Talk about what you already know about the full-service community school model and if you have experience with a school implementing the model

# What makes a school a “community school?”

- Many schools have elements of the community school framework
- The way we talk about community schools is driven by the Coalition for Community Schools as well as Minnesota law
- There are different “flavors” of the community school model
- Schools may have features similar to what we will talk about but don’t call themselves a community school
- We are not going to be the arbiters of what is and is not a community school

# Essential elements of a “community school”

- Four pillars
  - Collaborative leadership practices
  - Integrated student supports
  - Expanded and enriched learning time and opportunities
  - Active family, student, and community engagement
- Community school coordinator serves as the point person for the effort
- Continuous improvement
  - Needs and assets assessment
  - Strategic plan
  - Results based accountability
  - Evaluation

# Pillar One: Collaborative Leadership and Practices

- The “relational glue” of the community school
- Community organizations and families participate in planning and needs assessment
- School partners with outside organizations to coordinate supports and services
- Structures that facilitate relationships between school staff and the community



# Pillar Two: Integrated Student Supports

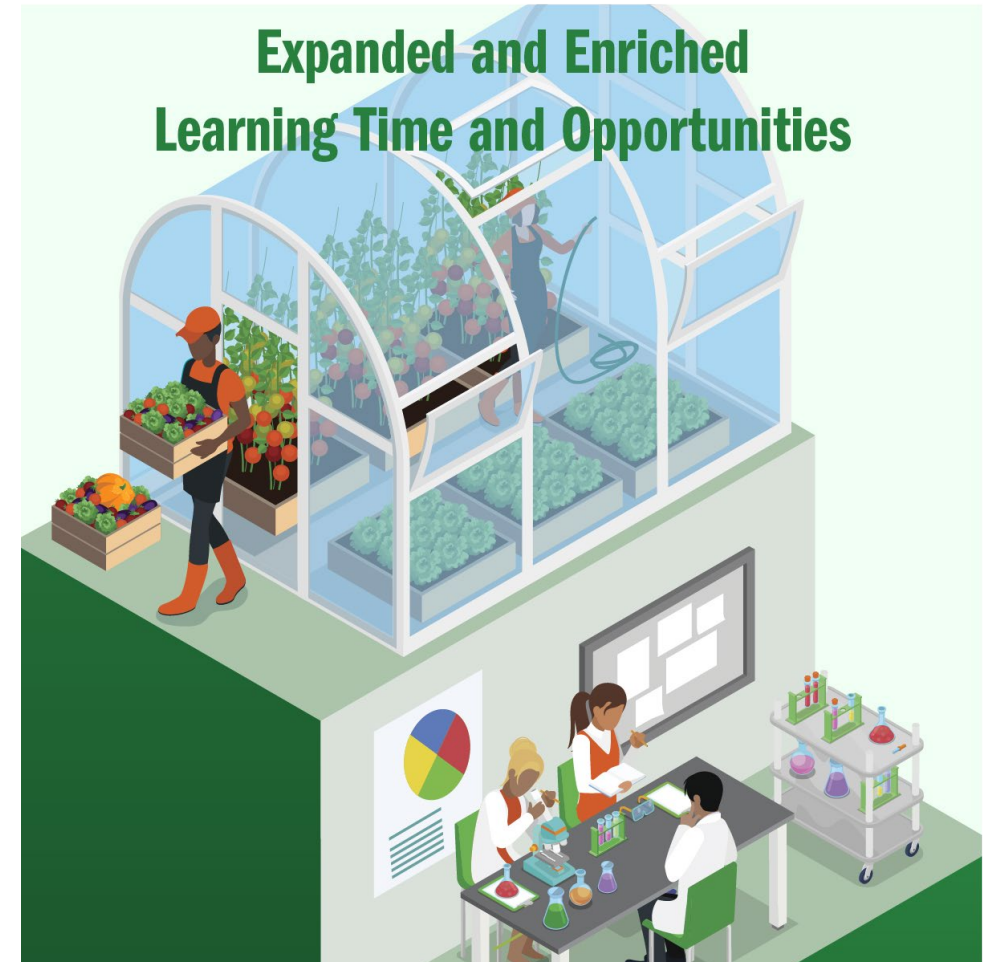
- Also Known as “wrap-around services”
- Selected to address academic and non-academic barriers to student success
- Unique to each community school
- Can change overtime as needs and resources change





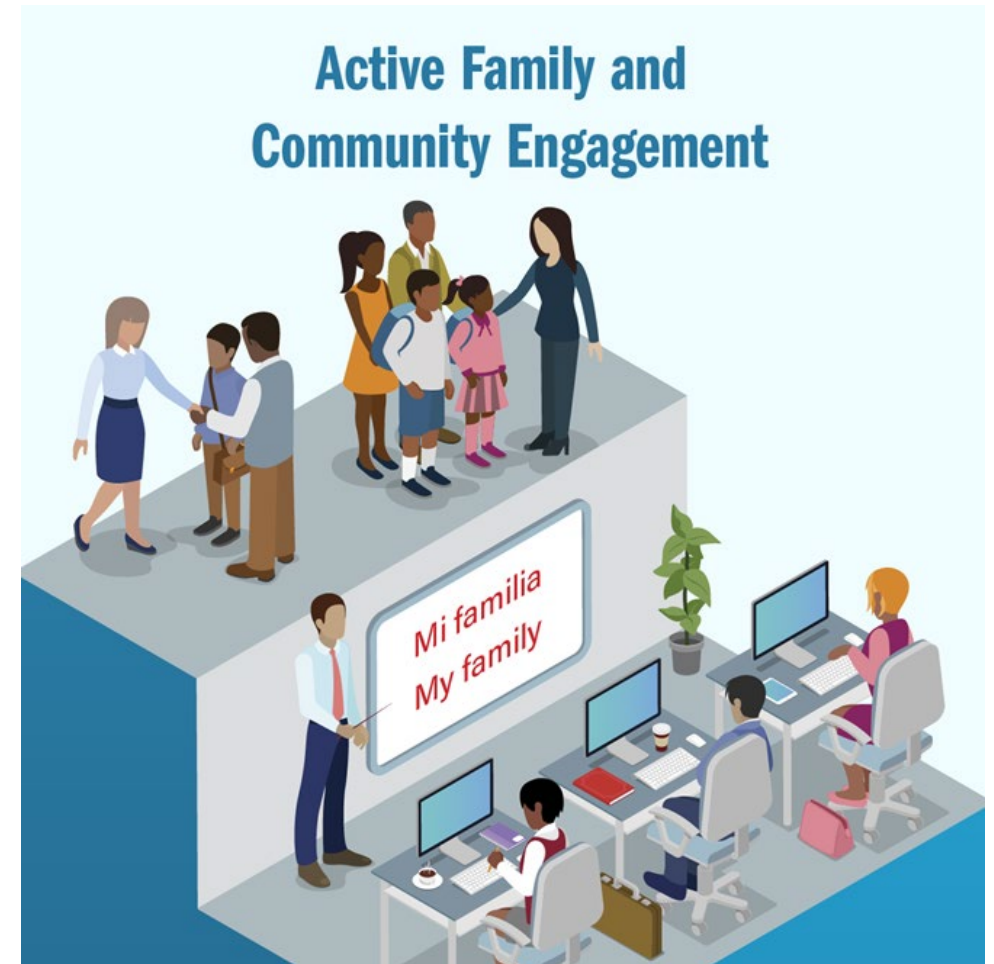
# Pillar Three: Expanded and Enriched Learning Time and Opportunities

- Academic opportunities that extend beyond the traditional school day
- Aligned with school's academic goals as well as community needs and priorities
- Leveraging community resources and established partnerships



# Pillar Four: Active Family, Student, and Community Engagement

- Neighborhood hub with educational opportunities for adults
- School staff and leaders develop their capacity to build trusting, collaborative relationships with families and community
- Welcoming and engaging climate and staff foster relationships and help families to be more involved in the decisions about their children's education
- Sharing power and investing families, students, and community in school success



# Community School Site Coordinator

Dedicated full-time staff on site whose sole responsibility is to:

- Facilitate a diverse group of families, students, teachers, and community members in analyzing data, identifying needs, and creating a community school plan
- Implement the community school plan
- Serve as a member of the school-based leadership team, teacher learning teams, and other leadership/governance teams
- Forge and sustain partnerships with community-based services
- Ensure families and students are connected with available services
- Maintain data collection to inform change and improvement

# Full-Service Community Schools In Minnesota

- [Minnesota Statutes, section 124D.231](#)
- 2016 and 2017 grants to 13 schools in seven districts
  - Rochester – Gage Elementary, **Riverside Elementary**, Rochester ALC
  - Duluth – Lincoln Park Middle, Myers-Wilkins Elementary, Denfeld High
  - Brooklyn Center – Earle Brown Elementary, **BC Secondary**, BC Academy
  - Minneapolis - Richard Green Central Park Elementary
  - Faribault – Jefferson Elementary
  - Deer River – **King Elementary**
  - St. Paul – Hamline Elementary

# Reflection

Some schools may have aspects of all four pillars but not yet function as a community school.

What essential elements bond the four pillars into a community school?



# Community School Resources

[Coalition for Community Schools](#)

[Community Schools Playbook](#)

[National Education Association Community Schools Micro-credential](#)

# Thank you!

**Dennis Duffy**

[dennis.duffy@state.mn.us](mailto:dennis.duffy@state.mn.us)

651-582-8304

**Jackie Blagsvedt**

[jacqueline.blagsvedt@state.mn.us](mailto:jacqueline.blagsvedt@state.mn.us)

651-582-8805